

# Distributor cabinet

according DIN 43870 bdew guideline 2008  
 inspected according VDE 0660 part 500 / IEC 439-1  
 inspected by TÜV according DIN EN 60439-5

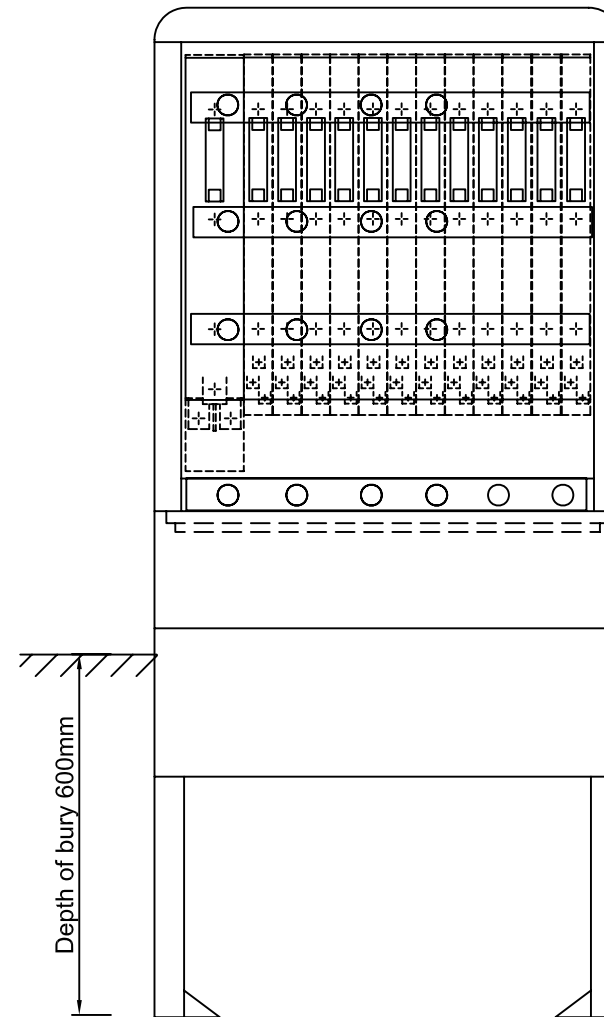
protection class of cabinet : IP44  
 class of protection II (with electrical insulation)  
 made of : fibreglass-reinforced polyester  
 (SMC process), IEC-695-2-1, halogen-free  
 colour : grey, similar to RAL 7035  
 lock: single swing handle  
 (with profile cylinder inside)

## contains the following items:

- 4-pole busbar system 30x5mm
- 1x NH2 vertical fuse switch disconnecter
- 12x NH00 vertical fuse switch disconnecter
- protection cover against accidental contact
- cable clamp rail in the cabinet

## optional:

- filling material for base SFM1
- dual swing handle
- RAL-painting on the outside



Type of cabinet:  
**GSAB 1S850**  
 H: 850+950  
 W: 785  
 D: 320

				date	06.12.2013	Distributor cabinet	Ang.-Nr.:	=
				name	M.Biermann			
				Urspr.		Ers.f.	Ers.d.	Lindenstraße 23 Tel: 49/03636/7614-76 Bl. 1 v.
								99718 Greußen Fax: 49/03636/7614-30 1 Bl.



**GSAB**  
 Elektrotechnik GmbH