

Distributor cabinet

according DIN 43870 bdew guideline 2008

inspected according VDE 0660 part 500 / IEC 439-1

inspected by TÜV according DIN EN 60439-5

protection class of cabinet : IP44

class of protection II (with electrical insulation)

made of : fibreglass-reinforced polyester

(SMC process), IEC-695-2-1, halogen-free

colour : grey, similar to RAL 7035

lock: single swing handle

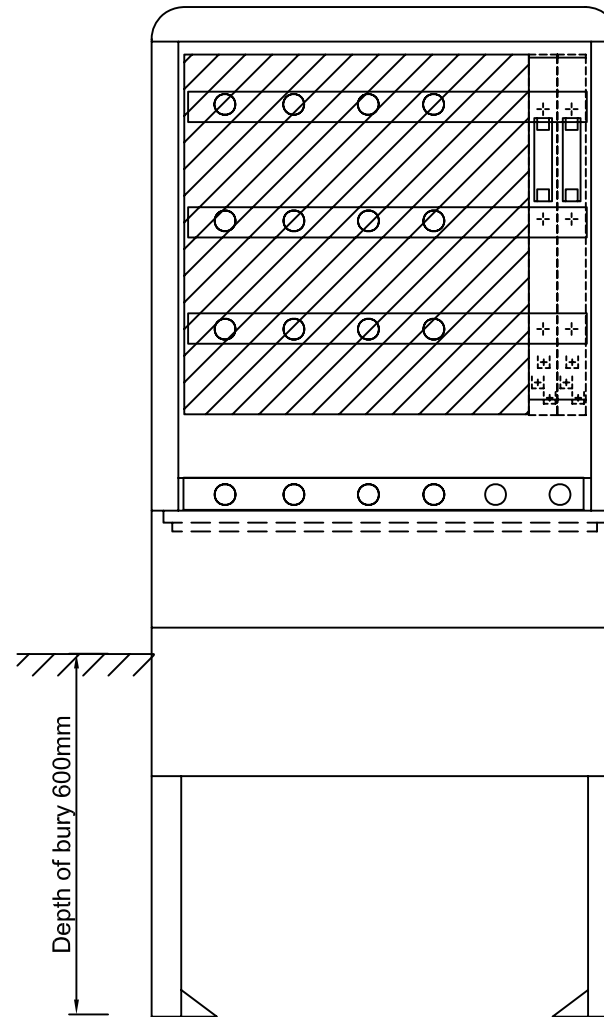
(with profile cylinder inside)

contains the following items:

- 4-pole busbar system 30x5mm
- 2x NH00 vertical fuse switch disconnecter
- protection cover against accidental contact
- reserve places
- cable clamp rail in the cabinet

optional:

- filling material for base SFM1
- dual swing handle
- RAL-painting on the outside



Type of cabinet:

GSAB 1S850

H: 850+950

W: 785

D: 320

		date	05.12.2013	Project: Distributor cabinet	Ang.-Nr.:
		name	M.Biermann		
		Urspr.		Ers.f.	Ers.d.



GSAB
Elektrotechnik GmbH

Lindenstraße 23	Tel: 49/03636/7614-76	Bl. 1	v.
99718 Greußen	Fax: 49/03636/7614-30	1	Bl.